

The First Goetheanum

designed by Rudolf Steiner as a Temple for 'Anthroposophia'

Part 4: Building construction.

Anthroposophy is the awareness of the divine wisdom incorporated in the complete human being

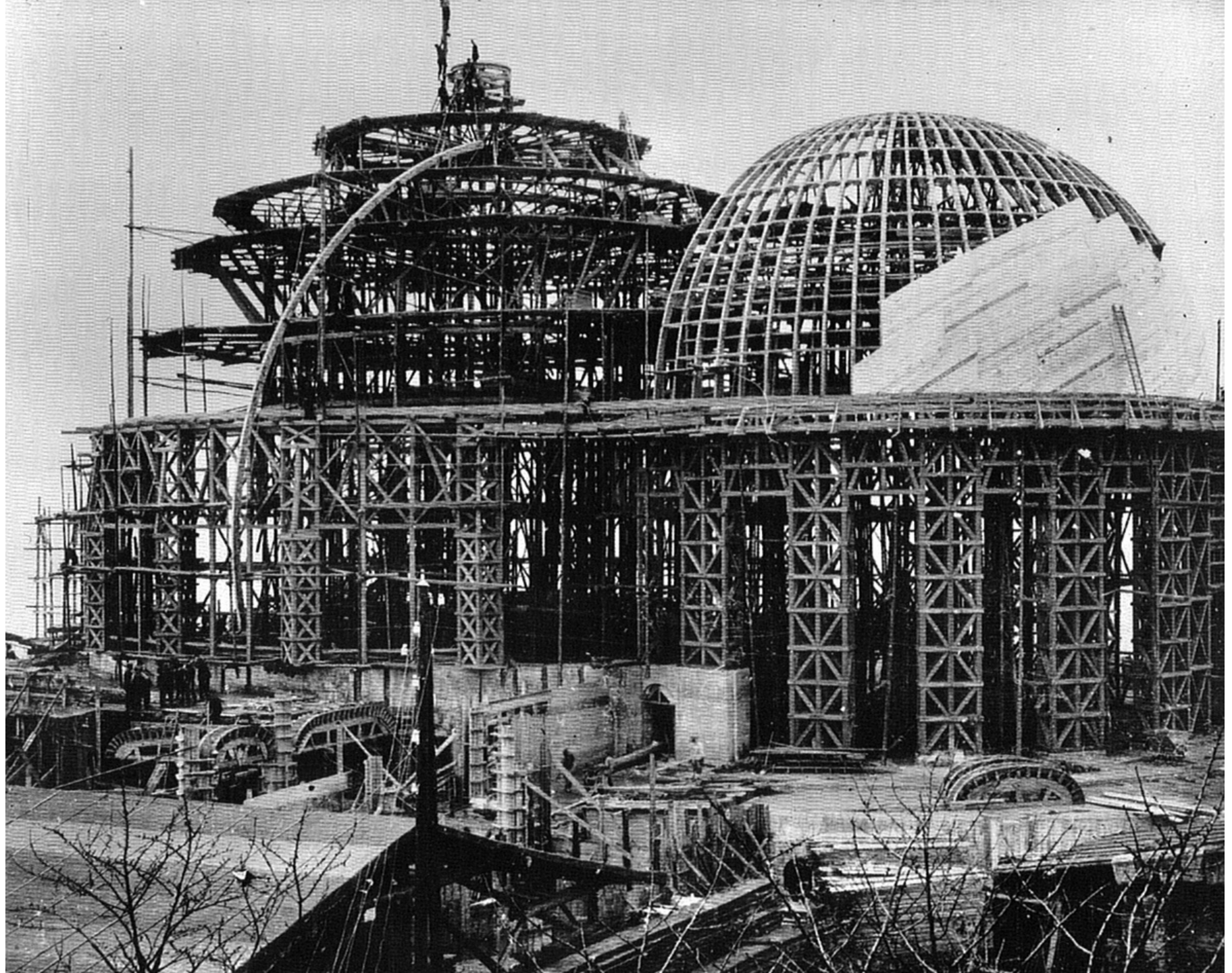
Rudolf Steiner's First Goetheanum

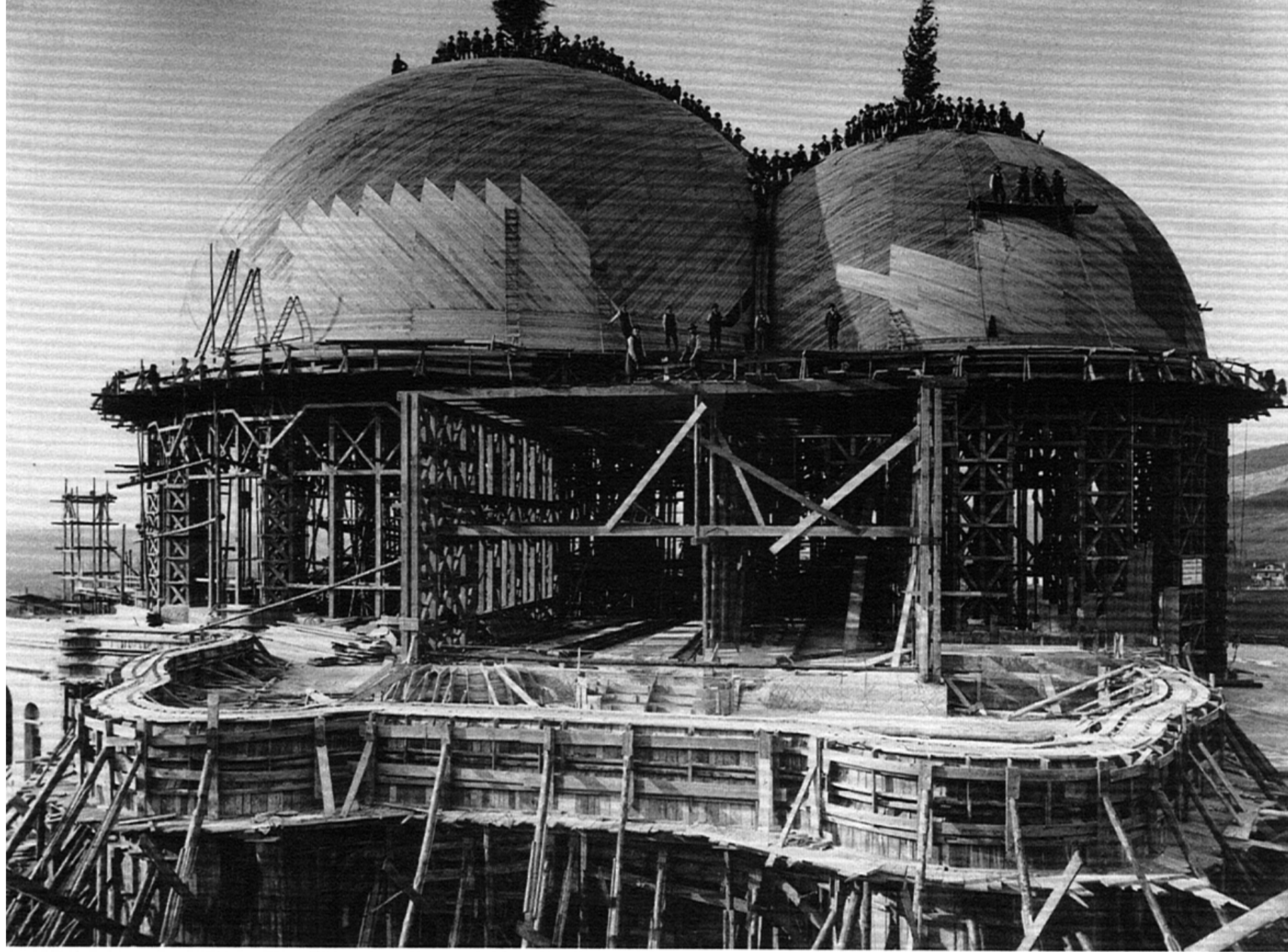
This unique building was in existence for less than ten years just over a hundred years ago. It was designed by Rudolf Steiner as an earthly home for the spirit of anthroposophy: **Anthroposophia**.

In this presentation I will give some background on:

- ❖ Part 1: Rudolf Steiner and his artistic architectural impulse.
- ❖ Part 2: The evolution of architectural monuments/temples through the ages.
- ❖ Part 3: The Geometry of the Building.
- ❖ **Part 4: Building construction.**
- ❖ Part 5: The Art within.

The head of construction was a shipbuilder who was thus able to manage the complicated 3-dimensional curvature of the rooves.

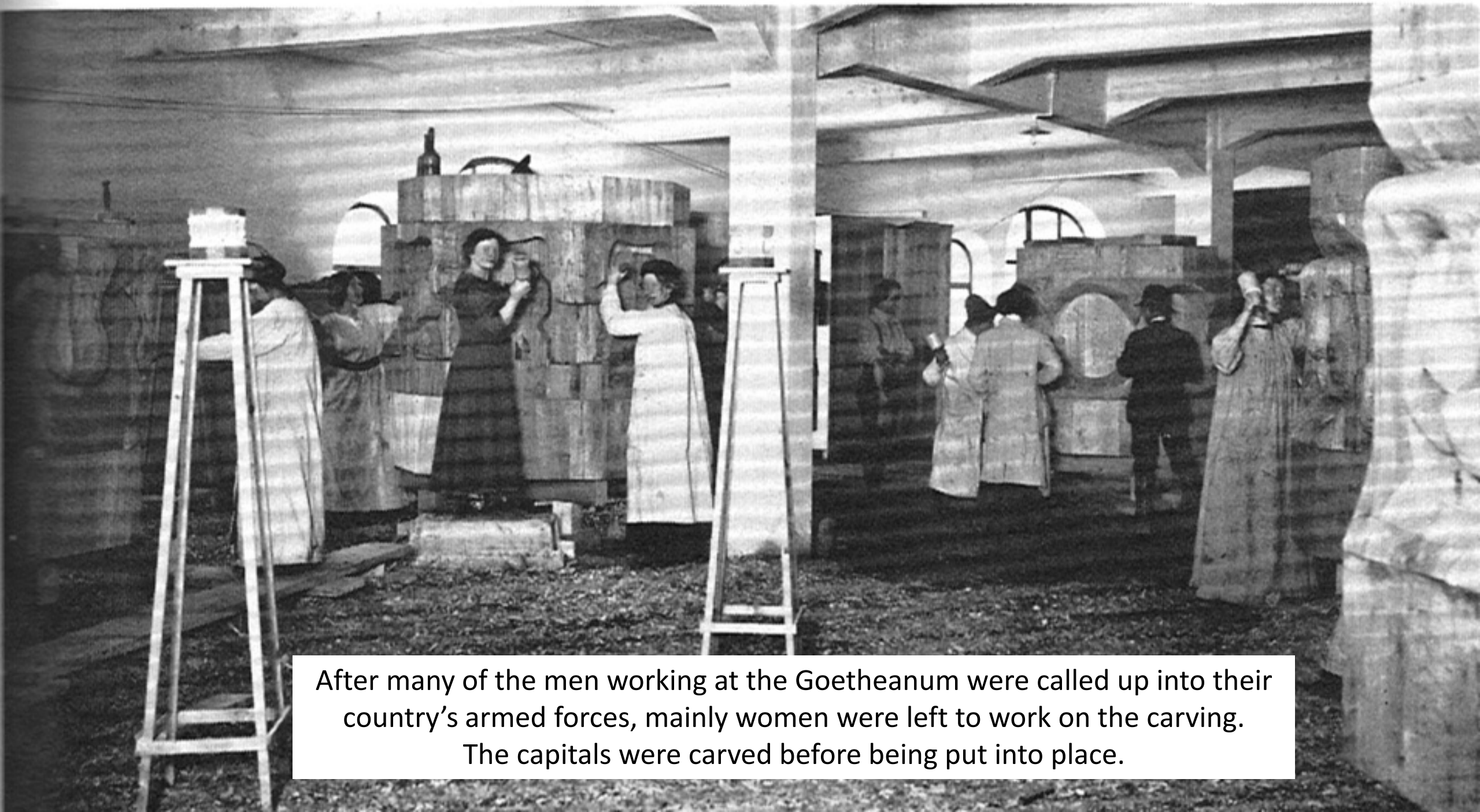




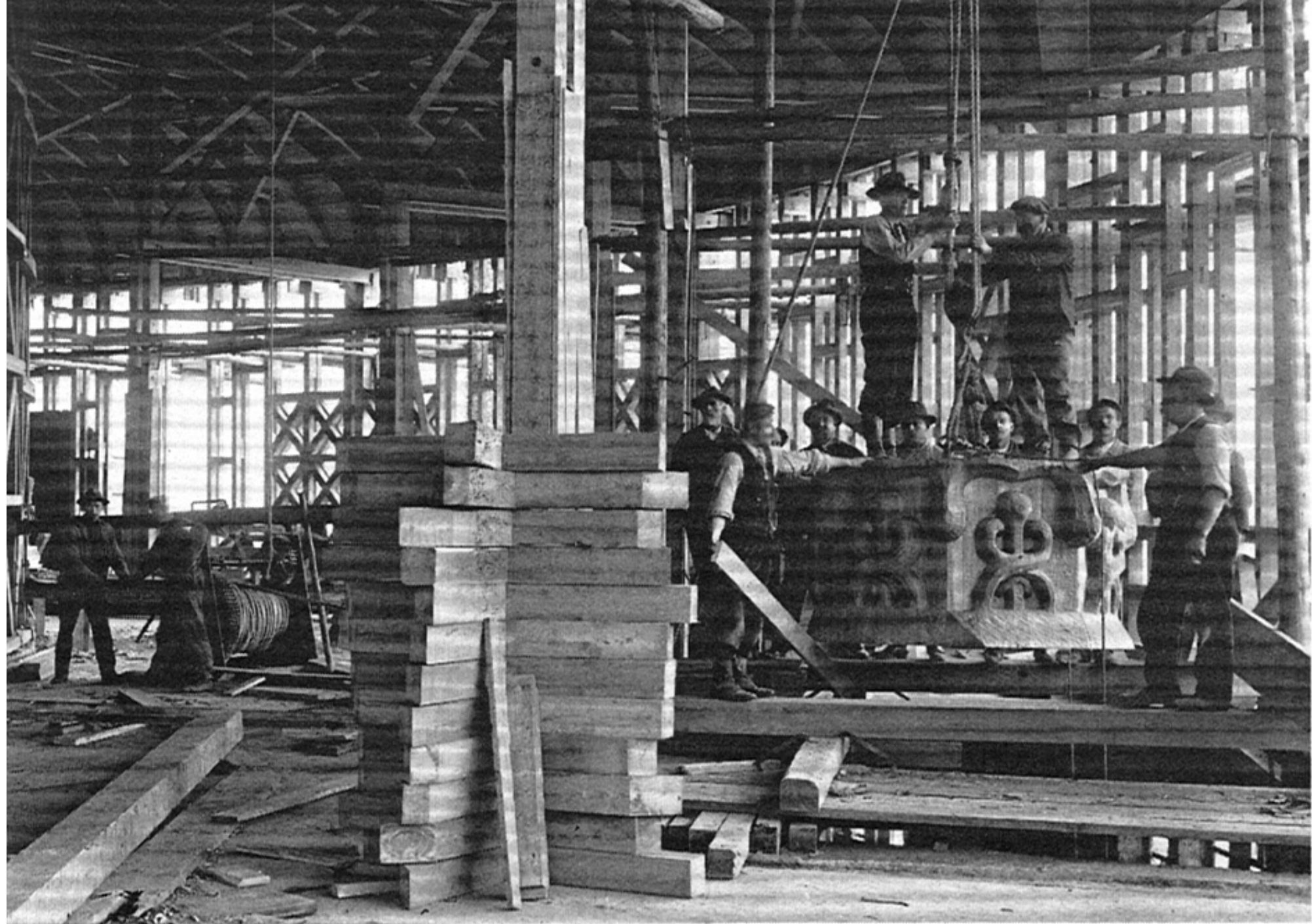
A lot of timber from all over Europe was involved. Each column was constructed (laminated) out of a different type of wood.



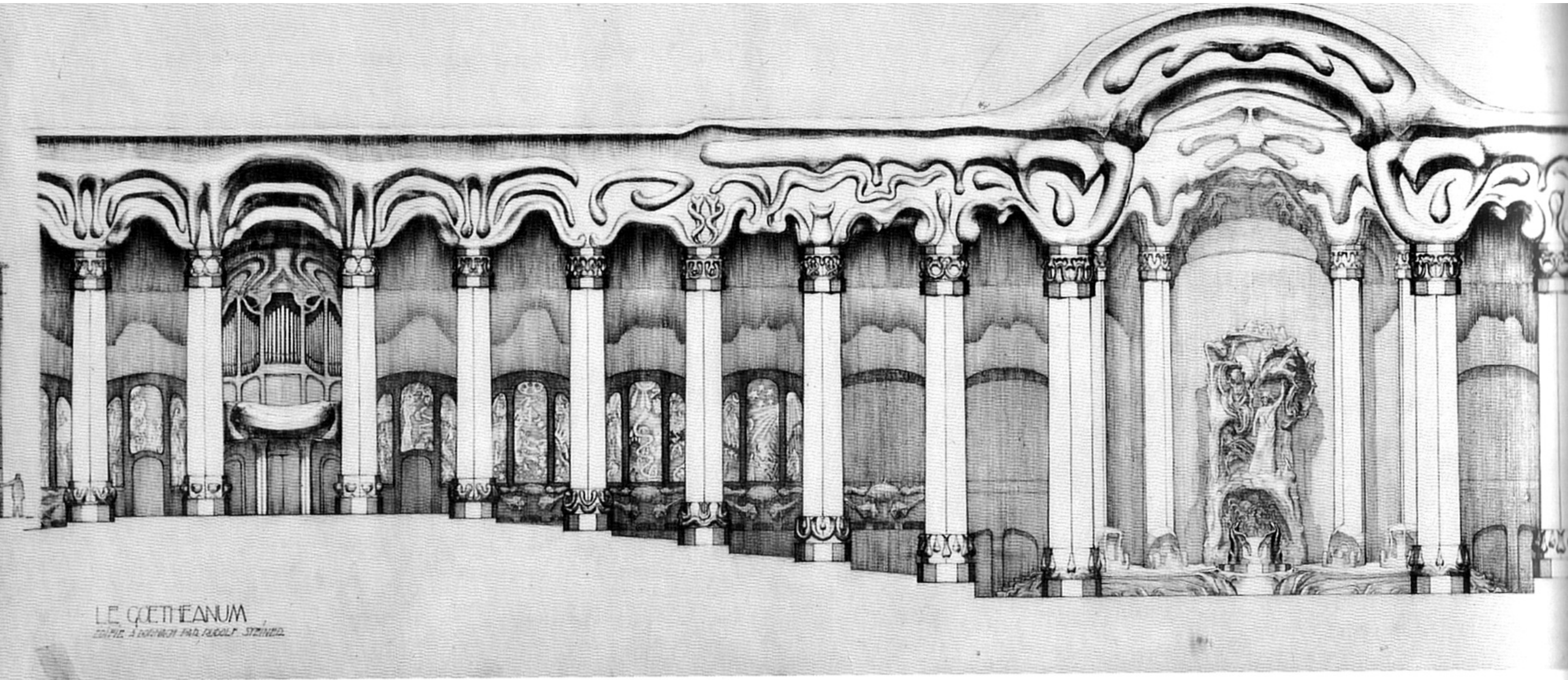




After many of the men working at the Goetheanum were called up into their country's armed forces, mainly women were left to work on the carving. The capitals were carved before being put into place.



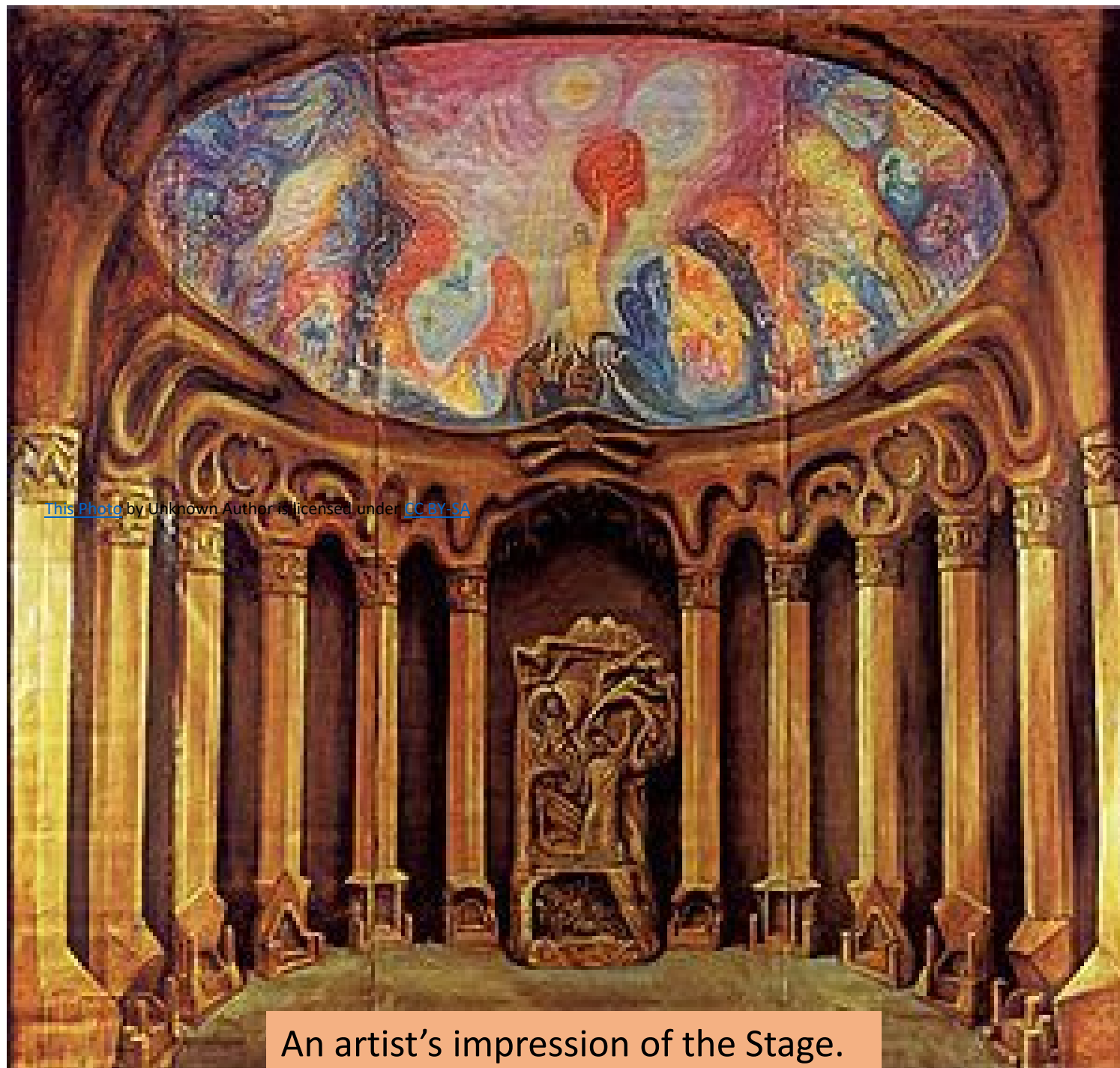
A wrap-around elevation of the auditorium columns and the associated carving.



Entrance
West

Coloured etched windows

Stage East



[This Photo](#) by Unknown Author is licensed under [CC BY-SA](#)

An artist's impression of the Stage.